



edition collection.

fantasies

LA ROSA

LA ROSA

la rosa s.p.a. via coti zelati 90 20030 palazzolo milanese (mi) italy p +39 02 990 44 222
www.larosaitaly.com info@larosaitaly.com

LA ROSA 100%  made in italy

la rosa mannequins are 100% recyclable
manufactured in high-tech carbon neutral factory in europe



















LRF 0017

misura/measures

Spalle/Shoulders	40 cm
Seno/Breast	84 cm
Vita/Waist	61 cm
Fianchi/Hips	87 cm
Altezza/Height	183 cm
Scarpe/Shoes	37 EU - 3.5 GB
Tacco/Heel	8 cm
Testa/Head	Rosa
Colore/Colour	Natural pink velour



LRF 005

misura/measure

Spalle/Shoulders	38 cm
Seno/Breast	89 cm
Vita/Waist	62 cm
Fianchi/Hips	87 cm
Altezza/Height	183 cm
Scarpe/Shoes	37 EU - 3.5 GB
Tacco/Heel	8 cm
Testa/Head	Rosa
Colore/Colour	Natural pink velour



LRF 0019

misura/measures

Spalle/Shoulders	38 cm
Seno/Breast	89 cm
Vita/Waist	62 cm
Fianchi/Hips	87 cm
Altezza/Height	183 cm
Scarpe/Shoes	37 EU - 3.5 GB
Tacco/Heel	8 cm
Testa/Head	Rosa
Colore/Colour	Natural pink velour



LRF 006

misura/measures

Spalle/Shoulders	40 cm
Seno/Breast	84 cm
Vita/Waist	61 cm
Fianchi/Hips	87 cm
Altezza/Height	183 cm
Scarpe/Shoes	37 EU - 3.5 GB
Tacco/Heel	8 cm
Testa/Head	Rosa
Colore/Colour	Natural pink velour



LRF 002

misura/measures

Spalle/Shoulders	40 cm
Seno/Breast	84 cm
Vita/Waist	64 cm
Fianchi/Hips	92 cm
Altezza/Height	171 cm
Scarpe/Shoes	37 EU - 3.5 GB
Tacco/Heel	10 cm
Testa/Head	Rosa
Colore/Colour	Natural pink velour



LRF 001

misura/measure

Spalle/Shoulders	38 cm
Seno/Breast	88 cm
Vita/Waist	58 cm
Fianchi/Hips	84 cm
Altezza/Height	173 cm
Scarpe/Shoes	37 EU - 3.5 GB
Tacco/Heel	10 cm
Testa/Head	Rosa
Colore/Colour	Natural pink velour



LRF 000

misura/measure

Spalle/Shoulders	38 cm
Seno/Breast	91 cm
Vita/Waist	62 cm
Fianchi/Hips	88 cm
Altezza/Height	187 cm
Scarpe/Shoes	37 EU - 3.5 GB
Tacco/Heel	8 cm
Testa/Head	Rosa
Colore/Colour	Natural pink velour









LRF 003

misura/measure

<u>Spalle/Shoulders</u>	38 cm
<u>Seno/Breast</u>	89 cm
<u>Vita/Waist</u>	62 cm
<u>Fianchi/Hips</u>	87 cm
<u>Altezza/Height</u>	183 cm
<u>Scarpe/Shoes</u>	37 EU - 3.5 GB
<u>Tacco/Heel</u>	8 cm
<u>Testa/Head</u>	Rosa
<u>Colore/Colour</u>	Black velour



LRF 009

misura/measure

<u>Spalle/Shoulders</u>	38 cm
<u>Seno/Breast</u>	89 cm
<u>Vita/Waist</u>	62 cm
<u>Fianchi/Hips</u>	87 cm
<u>Altezza/Height</u>	186 cm
<u>Scarpe/Shoes</u>	37 EU - 3.5 GB
<u>Tacco/Heel</u>	8 cm
<u>Testa/Head</u>	Rosa
<u>Colore/Colour</u>	Black velour



Testa/Head

Priscilla





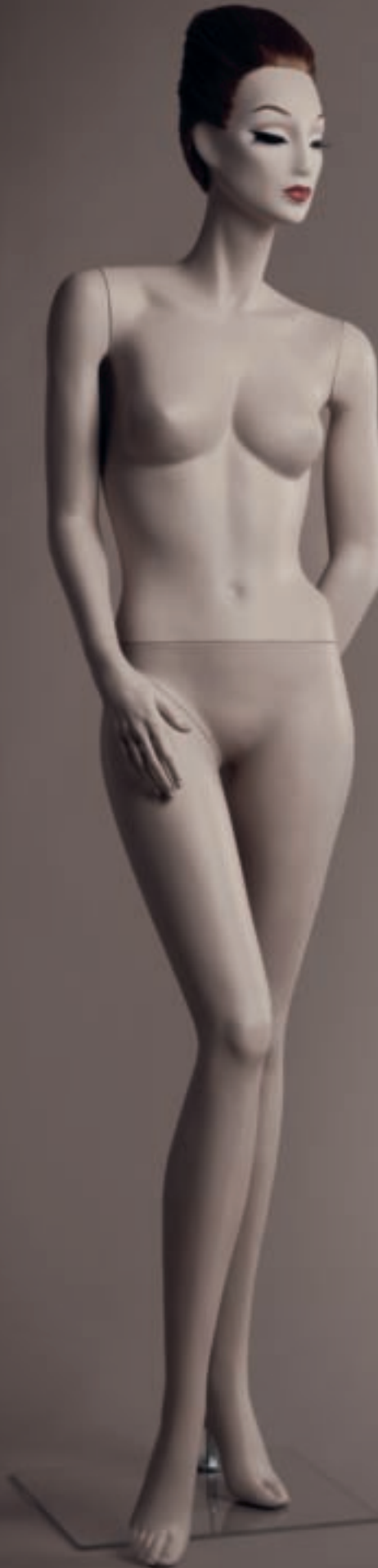




LRF 7A

misure/measures

Spalle/Shoulders	40 cm
Seno/Breast	84 cm
Vita/Waist	61 cm
Fianchi/Hips	87 cm
Altezza/Height	183 cm
Scarpe/Shoes	37 EU - 3.5 GB
Tacco/Heel	8 cm
Testa/Head	Priscilla
Colore/Colour	Epoca



LRF 4

misura/measures

Spalle/Shoulders	40 cm
Seno/Breast	84 cm
Vita/Waist	61 cm
Fianchi/Hips	87 cm
Altezza/Height	183 cm
Scarpe/Shoes	37 EU - 3.5 GB
Tacco/Heel	10 cm
Testa/Head	Priscilla
Colore/Colour	Epoca



LRF 7

misura/measures

Spalle/Shoulders	40 cm
Seno/Breast	84 cm
Vita/Waist	61 cm
Fianchi/Hips	87 cm
Altezza/Height	183 cm
Scarpe/Shoes	37 EU - 3.5 GB
Tacco/Heel	8 cm
Testa/Head	Priscilla
Colore/Colour	Epoca



LRF 10

misura/measures

Spalle/Shoulders	40 cm
Seno/Breast	89 cm
Vita/Waist	62 cm
Fianchi/Hips	88 cm
Altezza/Height	184 cm
Scarpe/Shoes	37 EU - 3.5 GB
Tacco/Heel	8 cm
Testa/Head	Priscilla
Colore/Colour	Epoca



LRF 18A

misura/measures

Spalle/Shoulders	40 cm
Seno/Breast	84 cm
Vita/Waist	61 cm
Fianchi/Hips	87 cm
Altezza/Height	183 cm
Scarpe/Shoes	37 EU - 3.5 GB
Tacco/Heel	8 cm
Testa/Head	Priscilla
Colore/Colour	Epoca



LRF 18

misure/measure

<u>Spalle/Shoulders</u>	40 cm
<u>Seno/Breast</u>	84 cm
<u>Vita/Waist</u>	61 cm
<u>Fianchi/Hips</u>	87 cm
<u>Altezza/Height</u>	183 cm
<u>Scarpe/Shoes</u>	37 EU - 3.5 GB
<u>Tacco/Heel</u>	8 cm
<u>Testa/Head</u>	Priscilla
<u>Colore/Colour</u>	Epoca



LRF 16

misura/measures

Spalle/Shoulders	42 cm
Seno/Breast	82 cm
Vita/Waist	63 cm
Fianchi/Hips	90 cm
Altezza/Height	180 cm
Scarpe/Shoes	37 EU - 3.5 GB
Tacco/Heel	12 cm
Testa/Head	Priscilla
Colore/Colour	Epoca



LRF 7

misura/measures

Spalle/Shoulders	40 cm
Seno/Breast	84 cm
Vita/Waist	61 cm
Fianchi/Hips	87 cm
Altezza/Height	183 cm
Scarpe/Shoes	37 EU - 3.5 GB
Tacco/Heel	10 cm
Testa/Head	Priscilla
Colore/Colour	Epoca



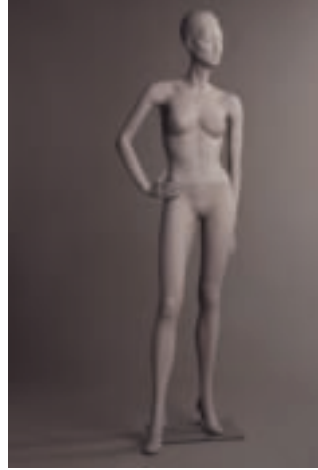
LRF 12

misura/measures

Spalle/Shoulders	40 cm
Seno/Breast	84 cm
Vita/Waist	61 cm
Fianchi/Hips	94 cm
Altezza/Height	116 cm
Scarpe/Shoes	37 EU - 3.5 GB
Tacco/Heel	10 cm
Testa/Head	Priscilla
Colore/Colour	Epoca



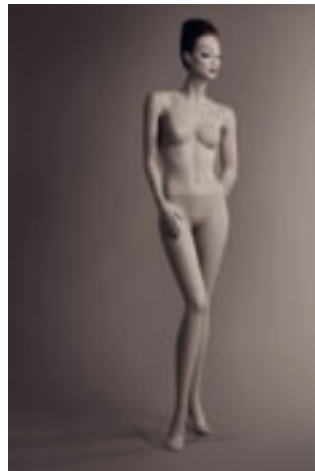
edition collection
fantasies



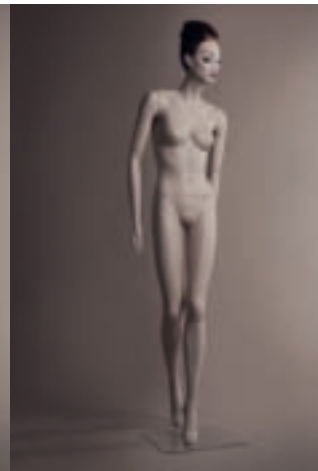
LRF 0017



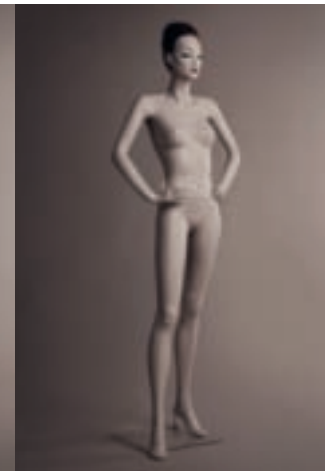
LRF 005



LRF 7A



LRF 4



LRF 10



LRF 0019



LRF 006



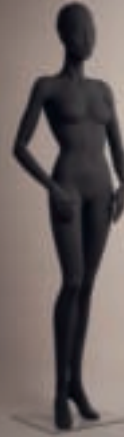
LRF 002



LRF 001



LRF 000



LRF 003



LRF 009



LRF 18A



LRF 18



LRF 16



LRF 7



LRF 12

La rosa



art direction Andrea Batilla e Sabrina Ciofi/Annus Mirabilis
graphic design Alessandro Gori.Laboratorium
photo Carolina Amoretti
styling Giovanni Dionisi
coordination and set design Elisa Cambioli

thanks to Elio Ferraro Gallery Store

fantasies

Creata a fine anni novanta, *Fantasies* è la materializzazione del sogno italiano di una **femminilità languida**, dalle forme dolci e **dall'aspetto decisamente rétro**.

Ispirata alle grandi dive del cinema degli Anni Cinquanta con un update di eleganza contemporanea, *Fantasies* ricrea le atmosfere rarefatte dell'Alta Moda romana o dei salotti delle sartorie milanesi. **Ricercatezza** è la parola che la definisce meglio.

Lo sguardo silenzioso e le posizioni rilassatamente stylish portano questa riedizione ad essere perfetta per un mercato adulto ed estremamente lussuoso.

--

Created at the end of the Nineties, *Fantasies* reflects the Italian dream of **elegant femininity** characterised by soft features and a **vintage look**. It is inspired by 50's movie stars but modernised with a contemporary elegance.

Fantasies retraces elite Alta Moda atmospheres typical of Rome or salons of couturiers in Milan. It's best defined by the word **refinement**.

The silent look and the restful fashionable positions make this new release perfectly suitable for a sophisticated and luxurious market.

--

edition collection

L'immenso e unico archivio La Rosa che data dal 1922 rivive in una chiave nuova e contemporanea.

Le edizioni storiche dei manichini più rappresentativi vengono riproposte attraverso un'attenta selezione in linea con le richieste del mercato e diventano terreno di sperimentazione per nuovi finishing, colori e styling.

La Rosa's huge and unique archive, dating back to 1922, has been revived with a new and contemporary view.

The historical editions of the most representative mannequins are exhibited through a careful selection in line with today's market requirements using experimentation in new finishes, colours and styling.

heads

all heads are interchangeable



natural / moulded / stylized

wig styles and colours

any natural mannequin
can have the make-up wig combination
of your choice

body colours

all our products are available in all colours
and with a matt
high-glossy
or velvet finish

bases



Calf fitting and
square glass base
(standard)

Foot fitting and
Boot fitting
(optional)

bases are available in
glass
metal
polished or satin
either square or
rectangular

calf fitting and square glass base
(standard)
foot fitting and boot fitting
(optional)

other available categories

male
children
torsos
bustos
accessories